

Quit the RIP if it is running. If the plugin has been supplied with an installation program, use that and follow the instructions. If you have no installation program, drag the appropriate plugin file into the `SW\Inputs` folder.

### 8.5.2 Creating an NT Pipe input

When you have an installed plugin file, start the RIP and follow this procedure:

1. Click **New** in the Input Controller. The RIP displays the Input Channel Edit dialog box. Choose `NT Pipe` from the **Type** drop-down list.

2. Give the input a suitable name and select a page setup. Select the **Enabled** box.

**Note:** The name you choose forms the last part of a longer network name for the pipe. We suggest that you choose a name that uses letters and numerals only (a - z and 0- 9) and that is a convenient length: do *not* include punctuation, space characters, or the wildcard characters (? and \*).

3. For most applications, you can now click **OK** to close the Input Channel Edit dialog box.

You can now read Section 8.5.4 on page 239 to see how to connect an application to this pipe. If you have difficulty, or know that you need to change the default configuration, read Section 8.5.3

### 8.5.3 Configuring the named pipe

The Configuration dialog box allows you change another part of the name for the pipe and to allow more than one connection to the same named pipe.

When configuring a front-end or server application to send data to the RIP using named pipes you must enter the full name of the pipe. The format for the name is:

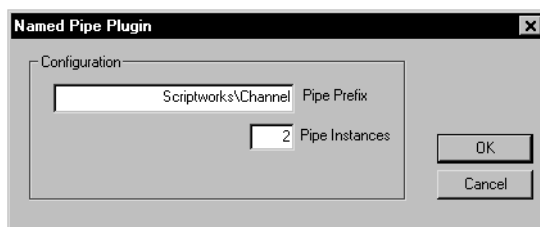
```
\\<machine>\pipe\<pipe prefix>\<name>
```

To get an actual name, replace `<machine>` with the name of the computer running the RIP, replace `<pipe prefix>` with the name entered in the Named Pipe

Plugin dialog box, and replace `<name>` with the name you entered in the Input Channel Edit dialog box.

If the RIP is running on a Windows NT system named `BRICK`, and the channel has been defined in the RIP with the name `Fred`, the pipe name would be:

```
\\BRICK\pipe\ScriptWorks\Channel\Fred
```



**Figure 8.5** Named Pipe Plugin dialog box

#### **Pipe Prefix**

If you wish to use a different scheme for pipe names you can change the prefix by clicking on the **Configure** button in the Input Channel Edit dialog box. The RIP displays the Named Pipe Plugin dialog box.

For example, entering `RIP` in the **Pipe Prefix** field would make the full pipe name:

```
\\BRICK\pipe\RIP\Fred
```

#### **Pipe instances**

Windows NT allows a named pipe to have a number of instances. This means that, for each pipe of a given name, Windows NT will allow more than one client (application) to open the pipe at any one time. The RIP plugin can then service the clients in sequence, one at a time.

Some clients, for example Color Central from Imation Publishing Software (formerly Luminous Technology), always expect to be able to connect to a named pipe. For this reason you should normally create at least two pipe instances. This allows the client software to reconnect to the pipe, in order to send the next job, while the RIP finishes processing the previous job.

If you wish to change the number of pipe instances from the default value of two you can do so in the Named Pipe Plugin configuration dialog box, as shown in Figure 8.5 above.

### 8.5.4 Connecting an application to the Harlequin RIP

Several applications include support for named pipe output. This is a general discussion: refer to the manual for your application for details.

Once the RIP has been configured to accept named pipe input, you must configure the other application to use a named pipe for communication with the RIP.

Typically, you do this:

1. Add a new printer to which the application can send data.
2. Select named pipe as the method of communicating with the printer.
3. Identify the particular named pipe to use, giving a name that matches one you have created in the RIP. The general form of the name is:

```
\\<machine>\pipe\<pipe prefix>\<name>
```

For example, when the machine is called BRICK, the pipe prefix is the default ScriptWorks\Channel, and the name (as entered in the Input Channel Edit dialog box) is Fred, then the full pipe name is:

```
\\BRICK\pipe\ScriptWorks\Channel\Fred
```

A period (.) can serve as a shortcut for the name of your local machine. If the supplying application and the RIP are on the same computer, the pipe name could be:

```
\\.\pipe\ScriptWorks\Channel\Fred
```

4. Give whatever other information the application requires, and complete the procedure that makes the printer available for use with the application.

If you have multiple copies of the RIP, or have published multiple NT Pipe input channels from a single installation of the RIP, you can repeat the same sequence for each channel.