

# The Raptor 68/85 Silver



## Compact, high-quality processing

Incorporates leading-edge product design and styling, innovative fully featured processing in a compact, space-saving "small footprint" application.

The processor has been developed in close co-operation with the world's leading silver diffusion plate and equipment suppliers.

Available in two formats, 68 cm (26.8") version covering formats 2-up and 4-up (portrait) and 85 cm (33.5") version covering 4-up and 8-up (portrait). As a stand alone unit, or configured for on-line operation with all the market's leading platesetters, this small and very efficient processor has more than enough capacity to support the most challenging medium sized clients. The pricing of this CtP processor makes it affordable to a substantially broader market segment.

State-of-the-art processing, flexibility, an excellent value for investment and Glunz & Jensen's proven reliability and service.



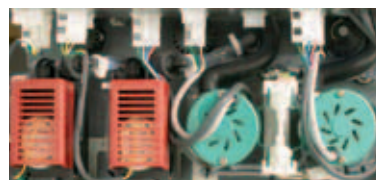
### Trouble free cleaning

Because of the new snap lock bearings, rollers require no adjustment, they may be cleaned or replaced in just moments.



### Hinged Top Cover

The Raptor gives easy access to tank sections, developer, wash, gum and dryer due to the hinged top cover.



### Accurate replenishment

The advanced electronics calculate the amount of media used versus run-time and maintains stable, waste-free processing.



### Developer section

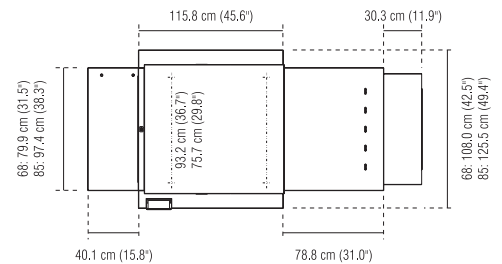
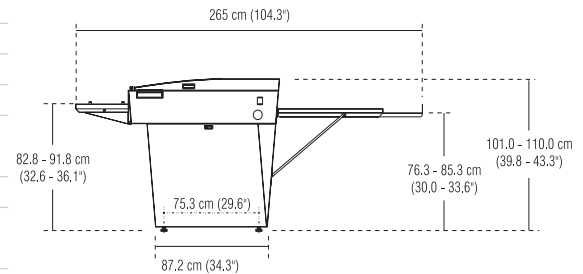
The UniFlow system and the intelligent design ensure optimal flow in the developer section.

## Technical specifications: The Raptor 68/85 Silver



Shown with additional options

Positioning	Recommended for throughput up to 20.000 m <sup>2</sup> per year
Accredited for	Agfa Lithostar™ plates (Violet "Plus" / "Ultra")
Capacity	40 - 120 cm / min (15.7 - 47.2" / min)
Material width	675 / 850 mm (26.6 / 33.5")
Material length	290 - 1100 mm (11.4 - 43.3")
Material thickness	0.15 - 0.3 mm (0.006 - 0.012")
Tank content, developer	68: 6.8 l (1.80 US gal) 85: 8.5 l (2.25 US gal)
Tank content, wash	15 l (3.96 US gal)
Tank content, rinse	68: 5.4 l (1.43 US gal) 85: 6.7 l (1.77 US gal)
Tank content, finisher	68: 4.4 l (1.16 US gal) 85: 5.5 l (1.45 US gal)
Temperature, developer	Adjustable from 20 - 40°C (68 - 104°F)
Temperature, wash	Adjustable from 20 - 40°C (68 - 104°F)
Temperature, rinse	Adjustable from 20 - 48°C (68 - 118°F)
Temperature, finisher	Lithostar plate 48°C (118°F) Lithostar Ultra plate 35°C (95°F)
Temperature, dryer (adjustable)	30 - 60°C (86 - 140°F)
Dwell times at 0.9 m (35.4")/min.	Developer: 12 sec, Diffusion: 11 sec, Wash: 10 sec, Rinse: 5 sec, Finisher: 3 sec
Water supply	Tap water, pressure 1- 6 bar / 15 - 87 psi
Wash	Tap water
Water consumption	200 ml / m <sup>2</sup> (0.053 US gal / m <sup>2</sup> )
Diameter of rollers	40 mm (1.6")
Area replenishment amount, dev.	0 - 500 ml / m <sup>2</sup> (0 - 0.132 US gal / m <sup>2</sup> )
Warm up time max	< 30 min from 18 - 40°C (64.4 - 104°F)
Level control	Yes
Power	50-60 Hz, 230 / 400V, 1/3
Power consumption	< 5.0 kW at 230 V
Voltage tolerance	+/- 10%
Weight	Empty: 275 kg (606 lbs) / 307 kg (677 lbs) Crated: 350 kg (772 lbs) / 388 kg (856 lbs)
Equivalent heat output	Max 11200 BTU/Hour
Approvals	Complies with CE safety standards, UL and c/UL certified



Standard equipment: Fully automatic replenishment based on square meter measurement, Circulation in wash section, Automatic container alarms, Emergency stop, World-wide electrical configurable.

Accessories: Closed stand, Cooling unit standard capacity 50/60 Hz, Drip Tray, Delivery table, Feed table, Remote Enabling System, Trolley for cleaning, RSP Wear and tear, RSP Electronic boards, RSP Rollers w/bearings and gears, RSP Electrical parts (heater and pumps), Plate Stacker and Additional Trolley, Interface for various plate setters (please contact Glunz & Jensen for information on interface availability).

Standard configurations may vary in the market. Specifications are subject to changes without prior notice.

# GLUNZ & JENSEN

Headquarters:  
Glunz & Jensen A/S  
Haslevej 13  
DK-4100 Ringsted  
Denmark  
Tel. +45 57 68 81 81  
Fax +45 57 68 83 40  
E-mail: gihq@glunz-jensen.com  
Internet: www.glunz-jensen.com

USA Operations:  
Glunz & Jensen, Inc.  
21405 Business Court  
Elkwood, VA 22718-1757  
USA  
Tel. +1 540 825-7300  
Fax +1 540 825-7525  
E-mail: usva@glunz-jensen.com